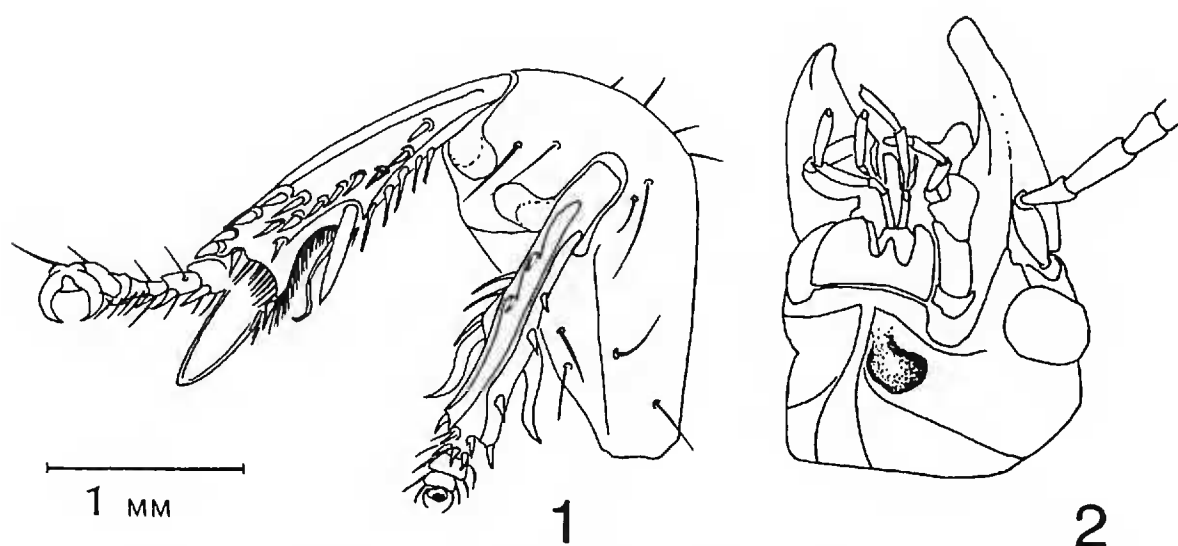


- VALENTINE, J. W. AND J. H. LIPPS. 1967. Late Cenozoic history of the southern California Islands. Pp. 21–35 in R. N. Philbrick (ed). (For complete citation see Axelrod.)
- WEAVER, D. W. AND D. P. DOERNER. 1967. Western Anacapa—a summary of the Cenozoic history of the Northern Channel Islands. Pp. 13–20 in R. N. Philbrick (ed.). (For complete citation see Axelrod.)

### SCIENTIFIC NOTE

**A teratomorphic carabid beetle with notes on polymorphic asymmetry of the gular region in the same population (Coleoptera: Carabidae).**—In a series of ten specimens of *Polpochila impressifrons* Dejean recently collected at Nova Teutonia, Brazil (January–February 1970, Fritz Plaumann) one female had a double tibia on the left anterior leg (Fig. 1). The more anteriorly placed tibia is perfectly formed while the posterior one is deformed, but nearly symmetrical. For example, the antennal comb spur is doubled and the cleaning setae are arranged in a straight row between the spurs. The tarsi on the deformed tibia are incomplete and the apical spur is doubled in laminate fashion.



FIGS. 1 and 2. *Polpochila impressifrons*. FIG. 1. Double tibia on left anterior leg of a female. FIG. 2. Fovea on venter of head of male.

In the same series of specimens, there is a total of 2 females and 8 males. Of the eight males, five have a deep comma-shaped fovea (Fig. 2) in the head capsule adjacent to the gula, but only on the right side (ventral aspect). One of the remaining males has a shallow depression there, while the other two males and the two females have no trace of this structure. Examination by means of a dissecting microscope (180 $\times$ ) did not reveal any sensory structures associated with the fovea and there does not seem to be any corresponding structure on the dorsum of the female, that is, a correlated structure with sexual functions (positioning, grip, etc.). Therefore, the function of this fovea or perhaps its accidental occurrence in some males must be studied further.—T. L. ERWIN, *Smithsonian Institution, Washington, D. C. 20560*.